



LESOTHO
CAMPUS

BOTHO
UNIVERSITY

VIBRANCE • INNOVATION • IMPACT

Botho University **PROSPECTUS 2025**



VIBRANCE



INNOVATION



IMPACT



#TransformingOpportunity
ACROSS SUB-SAHARAN AFRICA



The Botho Graduate Profile (BGP)

is a list of qualities that all Botho University students are encouraged to learn and imbibe before they graduate.

ENHANCING YOUR EMPLOYABILITY



ARTICULATE

Able to communicate information eloquently, effectively and appropriately to a given audience.



COLLABORATIVE

Considerate of and able to work and communicate effectively with teams of people from different social and cultural backgrounds.



CRITICAL - THINKING

Having the curiosity and open mindedness to acquire new knowledge by analyzing, reflecting on and evaluating information.



DIGITALLY LITERATE

Able to identify trustworthy information and use technology creatively and appropriately to solve problems, make decisions, and improve quality of life.



ENVIRONMENTALLY RESPONSIBLE

Committed to conserving resources and protecting the environment.



INNOVATIVE & ENTREPRENEURIAL

Able to identify opportunities and take measured risk to develop new and improved ideas, processes and products that create value.



KNOWLEDGEABLE & HARDWORKING

Understanding a field of study with the expertise, professionalism, motivation and commitment to apply the knowledge gained to solve problems and deliver quality work.



POSITIVE & CONFIDENT

Being friendly, optimistic, adaptable and resilient, and able to display healthy self-esteem, especially when interacting with others and making decisions.



SOCIALLY RESPONSIBLE

Makes decisions and takes actions ethically, with integrity, and in the best interest of society as a whole.

BGP Skills listed above are based on inputs from industry, academia, research, our context and global best practice and employability reports.

TABLE OF CONTENTS

About Us - Sub Saharan African University	4
Botho university 2024 Graduate tracer study	5
Our New Campus in Lesotho	6
Our Global Partnerships	7
Our Programmes	8
• Faculty of Business And Accounting	9-12
• Faculty of Engineering And Technology	13-16
• Faculty of Health And Education	17
General Admissions Information	18
Fostering Student Success and Delivering an Unforgettable University Experience	19
Remote Internships Statistics at Botho University	20

ABOUT US - Transforming Opportunity in Sub-saharan Africa



Botho University (BU) was founded in 1997 and has quickly grown into a prominent multi-disciplinary institution offering quality higher education across four countries across sub-saharan Africa: Lesotho, Botswana, Eswatini, and Namibia, alongside an Online Learning Campus. Botho University offers qualifications ranging from Certificates to Master's degrees, with plans to introduce Doctoral programs in the near future. With over 4,500 students and nearly 300 staff members, the university is a hub of learning and innovation. In Lesotho, it operates under three faculties: the **Faculty of Business & Accounting**, the **Faculty of Engineering and Technology** and the **Faculty of Health and Education**.

All of Botho University's programs are accredited by the relevant regulatory bodies in each country where it operates. **In Lesotho, all our academic offerings are fully accredited by the Council of Higher Education (CHE) and aligned to the Lesotho Qualifications Framework.**

The university has completed construction of its cutting-edge multi-million maloti campus in Hapena-Pena, next to Green City in Lesotho. We are elated to announce that we have moved to our brand new own campus from January 2025. Botho University is the first private institution to build its own campus in Lesotho and offer a high quality international standard learning environment for students.

The university's 2023-2027 strategy emphasizes the principles of Vibrance, Innovation, and Impact, ensuring that Botho University remains a dynamic and exciting place for students and staff alike. Guided by its core values of integrity, excellence, and inclusiveness, Botho University nurtures well-rounded, entrepreneurial graduates who are globally employable. These graduates possess the attitude, knowledge, skills, and competencies required to drive productivity and foster sustainable economic growth.

Committed to maintaining exceptionally high standards, Botho University is ISO 9001:2015 certified, demonstrating its adherence to international quality assurance standards.



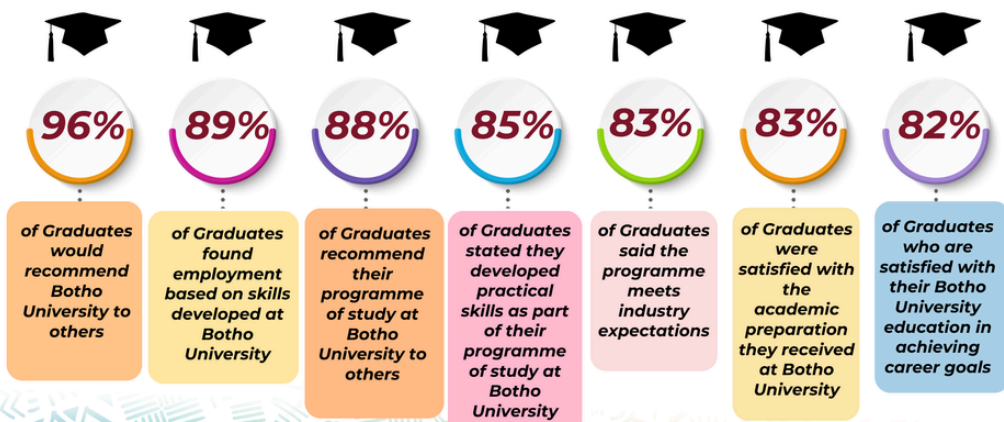
For more details on our Sustainability Social Impact Report please scan (QR Code)

BOTHO UNIVERSITY 2024 GRADUATE TRACER STUDY

with guidance from



International Finance Corporation
WORLD BANK GROUP



Botho University is dedicated to ensuring the relevance and impact of our academic offerings, as well as the employability of our graduates. To achieve this, we conduct regular graduate tracer studies, gathering valuable insights that inform our curriculum, student support services, and career readiness initiatives.

In 2024, we conducted one of our most comprehensive graduate tracer studies to date, under the expert guidance of the International Finance Corporation (IFC), a member of the World Bank Group. This extensive study surveyed graduates from Lesotho, Botswana, and our Blended and Distance Learning Campus, all of whom had successfully completed their programs of study between 2018 and 2023.

The findings from this graduate tracer study highlight the strong alignment between our academic programs and market needs. It demonstrates the success of our graduates in securing employment and advancing their careers, while emphasizing the practical, hands-on nature of our programs. These programs integrate real-world challenges and industry-specific case studies, ensuring students are job-ready upon graduation.

Our close engagement with employers is essential to the development of our curriculum. By collaborating with industry leaders, business networks, and government organizations, we ensure our programs remain relevant and forward-thinking. This employer-driven approach, combined with work-based learning opportunities such as internships and projects, enhances our graduates' employability and ensures they are equipped to make an immediate impact in their professional roles.

Botho University is committed to continuous improvement. The insights from this study shape our future academic strategies, ensuring our graduates are equipped with the skills and knowledge needed to thrive in an increasingly competitive global economy. Our comprehensive employability support services, career counseling, and alumni networking opportunities further empower our graduates and enhance their career prospects.

OUR NEW CAMPUS IN LESOTHO

As of January 2025, Botho University has officially moved to its own multi-million maloti campus in Hapena-pena area, Green City, Maseru, Lesotho. This showcases the university's commitment to provide quality education in facilities of international standards. The new Botho University campus offers custom classrooms, administrative offices, laboratories, sports facilities etc all with high speed internet facilities offering our students a highly conducive learning environment.

We proudly welcome all our Lesotho based students to our brand new campus. **Rea U Amohela**



OUR GLOBAL PARTNERSHIPS



The list of partners is not exhaustive and subject to change

OUR PROGRAMMES

All our programmes are fully accredited by the Council of Higher Education (CHE) and aligned to the Lesotho Qualifications Framework.

FACULTY OF BUSINESS & ACCOUNTING

Bachelor of Commerce (BCom) in Finance
Bachelor of Commerce (BCom) in Accounting
Bachelor of Commerce (BCom) in Risk Management
Bachelor of Business Administration (BBA) in Business Management

FACULTY OF ENGINEERING AND TECHNOLOGY

Bachelor of Science (BSc) in Computing
Bachelor of Science (BSc) in Data Science
Bachelor of Science (BSc) in Mobile Computing
Bachelor of Science (BSc) in Computer Networking

FACULTY OF HEALTH AND EDUCATION

Bachelor of Science (BSc) in Health Information Management

All information in this prospectus was accurate at the time of printing. For latest information please refer to www.bothouniversity.com.





Bachelor of Commerce in Finance

Programme details:

This programme targets students wishing to enter the financial, commercial banking and investment sectors. The programme develops an indepth understanding of finance with accounting practices and commerce. Opportunities are widely available with a multifaceted finance sector offering various positions catering to different skills and interests.

Admissions Criteria

1) Applicants are expected to have successfully completed secondary schooling. The typical entry requirement is LGCSE or other equivalent secondary school qualification.

2) LGCSE/equivalent with a minimum of 5 subjects of which 3 Credits (C) and 2 Pass (D) including minimum Credit (C) in Mathematics, Pass (D) in English.

3) Applicants in possession of a Diploma or Higher Diploma in related field may be given exemptions based on the credit point equivalency.

4) For enquiries and more information please visit our website: www.bothoUniversity.com

Graduates of this programme can:

- Keep record of company income, expenditure, assets and liabilities
- Handle money, cheques and other payments
- Manage assets
- Ensure all legal requirements are met
- Manage businesses
- Compile budget
- Control expenses
- Control expenses
- Manage purchases and sales
- Handle Tax matters
- Auditing or assist in auditing
- Prepare financial statements
- Prepare management accounts
- Management investment portfolios

Career Prospects:

- Accountant
- Accounts clerk
- Administrator
- Financial consultant
- Financial planner
- Financial secretary
- Company secretary
- Compliance officer
- Economist
- Asset manager
- Auditor
- Banker
- Bookkeeper
- Business manager
- Foreign exchange officer
- Insurance consultant
- Internal auditor
- Tax consultant
- Teacher/Lecturer
- Teller
- Property valuer
- Financial manager
- Supply chain manager
- Office administrator
- Property manager
- Investment manager
- Management accountant

Skills Developed:

- An interest in the 'business of business'
- Good analytical skills, and the ability to see the big picture
- Excellent mathematics skills
- Good planning and organizational abilities
- Strong personal and people skills
- Effective communication skills
- Attention to detail
- Adaptability and flexibility
- Energetic and an intense desire to learn
- Highly organised and effective decision making
- Internet savvy
- Enthusiasm and dedication

FACULTY OF BUSINESS & ACCOUNTING

Bachelor of Commerce in Accounting

Programme details:

This programme helps develop student's understanding of accounting with a deeper look into taxation, auditing, assurance, commerce, finance, strategic management, etc. It is targeted at those who would like to permeate the accounting sector, commercial banking sector, investment sector, or work in public sector companies or accounting firms.

Admissions Criteria

1) Applicants are expected to have successfully completed secondary schooling. The typical entry requirement is LGCSE or other equivalent secondary school qualification.

2) LGCSE/equivalent with a minimum of 5 subjects of which 3 Credits (C) and 2 Pass (D) including minimum Credit (C) in Mathematics, Pass (D) in English.

3) Applicants in possession of a Diploma or Higher Diploma in related field may be given exemptions based on the credit point equivalency.

4) For enquiries and more information please visit our website: www.bothouniversity.com

Graduates of this programme can:

- Keep record of company income, expenditure, assets and liabilities
- Handle money, cheques and other payments
- Manage assets
- Ensure all legal requirements are met
- Manage businesses
- Compile budget
- Control expenses
- Manage purchases and sales
- Handle Tax matters
- Auditing or assist in auditing
- Prepare financial statements
- Prepare management accounts
- Management investment portfolios

Career Prospects:

- Accountant
- Accounts clerk
- Administrator
- Financial consultant
- Financial planner
- Financial secretary
- Company secretary
- Compliance officer
- Economist
- Asset manager
- Auditor
- Banker
- Bookkeeper
- Business manager
- Foreign exchange officer
- Insurance consultant
- Internal auditor
- Tax consultant
- Teacher/Lecturer
- Teller
- Property valuer
- Financial manager
- Supply chain manager
- Office administrator
- Property manager
- Investment manager
- Management accountant

Skills Developed:

- Computer skills
- Attention to detail
- Interest in banking systems
- Research
- Analytical
- Critical thinking
- Entrepreneurial
- Problem-solving



SCAN ME

for detailed programme
information



FACULTY OF BUSINESS & ACCOUNTING

Bachelor of Commerce in Risk Management

Programme details:

This programme provides basic, technical and advanced skills in risk management and insurance. It covers areas such as economics, information technology, accounting, research, risk management, insurance and management which are vital for the success of risk professionals. It develops the knowledge, skills and competencies of risk practitioners who would be employed anywhere in the world.

Admissions Criteria

1) Applicants are expected to have successfully completed secondary schooling. The typical entry requirement is LGCSE or other equivalent secondary school qualification.

2) LGCSE/equivalent with a minimum of 5 subjects of which 3 Credits (C) and 2 Pass (D) including minimum Credit (C) in Mathematics, Pass (D) in English.

3) Applicants in possession of a Diploma or Higher Diploma in related field may be given exemptions based on the credit point equivalency.

4) For enquiries and more information please visit our website: www.bothouniversity.com

Graduates of this programme can:

- Discover, model and manage risk
- Solve risk and insurance related problems
- Develop corporate governance models
- Research on existing problems and develop solutions
- Develop business continuity plans
- Identify and evaluate sources of finance
- Appraise investment projects
- Manage finances

- Plan on taxation issues
- Develop new and innovative ideas and start own enterprises
- Manage property and related issues
- Manage international business finance

Career Prospects:

- Chief Risk Officers / Takers
- Underwriters
- Financial Advisors
- Educationist
- Financial Risk Managers
- Compliance and Governance Managers
- Insurance Brokers / Insurance Adjusters
- Investment Analysts
- Portfolio Managers
- Credit Analysts
- Captive Insurers

Skills Developed:

- Financial management
- Presentation
- Research
- Analytical
- Critical thinking
- Entrepreneurial
- Problem solving
- Microsoft Word, Excel, Powerpoint

SCAN ME

for detailed programme information



FACULTY OF BUSINESS & ACCOUNTING

Bachelor of Business Administration in Business Management

Programme details:

This program is designed for students seeking to build a career in management, primarily in profit driven sectors. It carefully combines theoretical and practical teaching as part of its training approach, while incorporating work-related learning to ensure the production of graduates with both the knowledge and skills to succeed in the competitive business sector worldwide.

Admissions Criteria

1) Applicants are expected to have successfully completed secondary schooling. The typical entry requirement is LGCSE or other equivalent secondary school qualification.

2) LGCSE/equivalent with a minimum of 5 subjects of which 3 Credits (C) and 2 Pass (D) including minimum Credit (C) in Mathematics, Pass (D) in English.

3) Applicants in possession of a Diploma or Higher Diploma in related field may be given exemptions based on the credit point equivalency.

4) For enquiries and more information please visit our website: www.bothouniversity.com

Graduates of this programme can:

- Address practical business problems
- Make key business decisions
- Influence business strategy
- Analyse business data
- Manage and organize product portfolio
- Appraise corporate projects
- Manage small business
- Plan and implement strategic plan
- Establish new ventures
- Research and development

Career Prospects:

- Country Manager
- Branch Manager
- Branch Supervisor
- Business Lecturer
- Business Consultant
- Change Management Consultant
- Business Process Orchestration Analyst
- Operations Manager

Skills Developed:

- Understanding of facts and figures
- Computer skills
- Presentation skills
- Market intelligence
- Ability to deal with people
- Interest in starting and growing a business





Bachelor of Science in Mobile Computing

Programme details:

This programme focuses on the development and deployment of applications and systems for mobile platforms. Students will gain expertise in mobile application development, wireless communication, and user interface design. Graduates will be well-positioned to address the growing demand for mobile computing solutions in sectors like business, healthcare, and entertainment, as mobile technology continues to revolutionise daily life and industry practices.

Admissions Criteria

- 1) Applicants are expected to have successfully completed secondary schooling. The typical entry requirement is LGCSE or other equivalent secondary school qualification.
- 2) LGCSE/equivalent with a minimum of 5 subjects of which 3 Credits (C), 2 Pass (D) including minimum Pass (D) in English, Pass (D) in Mathematics.
- 3) Applicants in possession of a Diploma or Higher Diploma in related field may be given exemptions based on the credit point equivalency.
- 4) For enquiries and more information please visit our website: www.bothouniversity.com

Graduates of this programme can:

- Undertake mobile IT Security and game development
- Design and implement complex mobile applications for different platforms
- Install and configure mobile applications, and manage mobile networks

Career Prospects:

- Mobile Solution Specialist
- Mobile Application Developer
- Mobile Computing Analysts
- Game Developers
- Mobile Technicians
- Mobile Security Experts
- Mobile Phone Verification Manager for Android, IOS and Windows
- Mobile Applications Developer for Android, IOS and Windows
- Mobile edutainment

Skills Developed:

- Mobile App Development
- User Interface (UI) and User Experience (UX) Design
- Mobile Operating Systems
- Cross-Platform Development
- Mobile Database Management
- Mobile Security
- Mobile Networking
- Mobile Testing and Debugging
- Mobile Analytics
- Mobile Cloud Computing
- Mobile Payment Integration



Bachelor of Science in Computing

Programme details:

This programme provides students with a comprehensive understanding of computing principles, technologies, and methodologies. It emphasizes problem-solving, software development, and system design. Graduates are equipped with the knowledge to develop innovative computing solutions in various industries and adapt to the rapidly evolving technological landscape. The programme is ideal for those aspiring to excel in fields such as software engineering, artificial intelligence, and data science.

Admissions Criteria

- 1) Applicants are expected to have successfully completed secondary schooling. The typical entry requirement is LGCSE or other equivalent secondary school qualification.
- 2) LGCSE/equivalent with a minimum of 5 subjects of which 3 Credits (C), 2 Pass (D) including minimum Pass (D) in English, Pass (D) in Mathematics.
- 3) Applicants in possession of a Diploma or Higher Diploma in related field may be given exemptions based on the credit point equivalency.
- 4) For enquiries and more information please visit our website: www.bothouniversity.com

Graduates of this programme can:

- Plan IT systems for businesses
- Develop and maintain computer systems
- Install computer networks
- Provide technical support
- Write manuals about the equipment they make
- Design new technologies
- Administer databases
- Find ways of making businesses more efficient using technology
- Undertake programming

Career Prospects:

- Software Engineer
- Network Engineer
- Network Administrator
- Database Designer
- Database Administrator
- Web Designer
- Teachers/Lecturer
- System Administrator
- IT Manager

Skills Developed:

- Programming Languages
- Software Development
- Database Management
- Web Development
- Networking
- Operating Systems
- Cybersecurity
- Data Analysis
- Cloud Computing
- Mobile Development
- Project Management

SCAN ME

for detailed programme information



Bachelor of Science in Computer Networking

Programme details:

This programme equips students with in-depth knowledge of networking technologies, protocols, and system management. It emphasizes the design, implementation, and maintenance of secure and efficient network infrastructures. With a focus on real-world applications, graduates are prepared to tackle challenges in areas like network security, cloud computing, and internet technologies, ensuring seamless communication and connectivity in organisations.

Admissions Criteria

- 1) Applicants are expected to have successfully completed secondary schooling. The typical entry requirement is LGCSE or other equivalent secondary school qualification.
- 2) LGCSE/equivalent with a minimum of 5 subjects of which 3 Credits (C), 2 Pass (D) including minimum Pass (D) in English, Pass (D) in Mathematics.
- 3) Applicants in possession of a Diploma or Higher Diploma in related field may be given exemptions based on the credit point equivalency.
- 4) For enquiries and more information please visit our website: www.bothouniversity.com

Career Prospects:

- Network Engineer
- Technical Support Engineer
- Network Administrator
- Systems Engineer
- Network Security Associate
- Network Data Engineer
- Network Field Technician
- Network Security Analyst
- IT Manager

Graduates of this programme can:

- Understanding Structure and functions of the internet
- Building Simple LANs and Enterprise Networks
- Performing Basic Configurations on Routers and Switches
- Wireless LANs and Security Concepts
- Resolving common issues with protocols in both IPV4 and IPV6 Networks
- WAN technologies
- Implementation of Quality of Service
- Virtualization, Software defined networking, and automation in evolving networks

Skills Developed:

- Networking Protocols
- Network Architecture and Design
- Routing and Switching
- Network Security
- Wireless Networking
- Network Management and Monitoring
- Network Virtualisation
- Cloud Computing and Networking
- Network Troubleshooting
- Cryptography
- Operating Systems
- Programming and Scripting
- Project Management



Bachelor of Science in Data Science

Programme details:

This programme is concerned with extracting intelligence from data. This is done by applying cutting-edge techniques from Statistics, Mathematics and Computer Science. The techniques used to understand the modern abundance of data are at the intersection of computing and mathematics, including statistics and machine learning, and there is a high demand in the industry. Furthermore, the qualification will aid in making data-driven decisions in the bid to attain Sustainable Environment and Sustainable Economic Development.

Admissions Criteria

- 1) Applicants are expected to have successfully completed secondary schooling. The typical entry requirement is LGCSE or other equivalent secondary school qualification.
- 2) LGCSE/equivalent with a minimum of 5 subjects of which 3 Credits (C), 2 Pass (D) including minimum Pass (D) in English, Pass (D) in Mathematics.
- 3) Applicants in possession of a Diploma or Higher Diploma in related field may be given exemptions based on the credit point equivalency.
- 4) For enquiries and more information please visit our website: www.bothouniversity.com

Graduates of this program can:

- Apply data-driven models in various fields like finance, biology, health, education, agriculture, and many other fields
- Communicate in technical and non-technical terms concepts of Data Science in different sectors of the economy
- Develop new data processing models
- Apply developed models to various problems
- Develop multiple programming languages used for expressing solutions
- Safeguard the ethical use of data in all aspects of their profession
- Work effectively in a team
- Communicate effectively
- Develop research skills
- Develop entrepreneurial skills

Career Prospects:

- Data Analyst
- Data Mining Engineer
- Data Architect
- Data Scientist
- Senior Data Scientist
- Business Intelligence Analyst
- Machine Learning Scientist
- Clinical Data Managers

Skills Developed:

- Statistical analysis and computing
- Machine learning
- Deep learning
- Processing large data sets
- Data visualisation
- Data wrangling
- Mathematics
- Programming



SCAN ME

for detailed programme information



FACULTY OF HEALTH & EDUCATION

Bachelor of Science in Health Information Management

Programme details:

This programme combines Science, Business, and Information Technology to ensure that students who undertake it come out furnished with the necessary skills they will need to work in middle to senior management grades in clinical and hospital settings or physicians' offices as Health Data & Information Managers, Bio Statisticians, Medical Informaticians, Data Quality Managers, Researchers, and Public Health Information Managers or Officers.

Admissions Criteria

- 1) Applicants are expected to have successfully completed secondary schooling. The typical entry requirement is LGCSE or other equivalent secondary school qualification.
- 2) LGCSE/equivalent with a minimum of 5 subjects of which 3 Credits (C), 2 Pass (D) including minimum Pass (D) in English, Pass (D) in Mathematics, Pass (D) in Biology/Double Science.
- 3) Applicants in possession of a Diploma or Higher Diploma in related field may be given exemptions based on the credit point equivalency.
- 4) For enquiries and more information please visit our website: www.bothouniversity.com

Graduates of this programme can:

- Build effective systems to collect, generate, organise, collate, analyse, interpret and disseminate health related data
- Organise and present health related information for policy, planning and for operations management of the health sector
- Design data collection tools/instruments
- Conduct special studies/evaluations on health information areas
- Develop protocols/guidelines for health information management
- Develop and manage a health informatics infrastructure
- Develop and administer medical databases
- Ensure privacy and ethical practices when managing patient data
- Carry out medical transcription
- Carry out coding of diseases and drugs using ICD 10 or later standards

Career Prospects:

- Health Data & Information Management Officer/Managers
- Medical Informatician
- Data Quality Manager & Researcher
- Public Health Information Managers/ Officers
- Inpatient and Outpatient HIM Coder & Coding Educator
- Director – Coding Operations Hospital
- Health Information Management Analyst/Coder
- Health Information Management Programme Director
- Health Information Management Medical Coding Manager
- Health Information Management Consultant
- Health Information Management Practice Leader Operations
- Health Information Services Manager
- Insurance Manager
- Hospital Administrator

Skills Developed:

- Computer skills
- Professional writing
- Presentation skills
- Data collection and analysis skills
- Problem-solving skills
- Creative, critical, logical and analytical thinking skills
- Team building and management skills

SCAN ME

for detailed programme information



GENERAL ADMISSIONS INFORMATION

Points	UK IGCSE, UK COSC, Botswana BCCSE, Lesotho LCCSE, Eswatini SGCSE, Namibia NSSC Ordinary, Namibia NSSC O-Level, South Africa Senior Certificate SG	UK GCSE/GCSE O-Level	South Africa NSC	West Africa WASSCE/SSS-CE/GBCE	UK GCE AS-Level, Namibia NSSC AS-Level, South Africa Senior Certificate HG	IBDP Standard-Level	UK HIGCSE, Namibia NSSC Higher	UK GCE A-Level	IBDP Higher-Level	Points
12								A	7	12
11								B	6	11
10					A, a	7	1	C	5	10
9					B, b	6	2	D	4	9
8	A*, A	A*, A, 9, 8, 7	A+, A, 7	A1	C, c	5	3	E	3	8
7	B	B, 6, 5	B, 6	B2, B3	D, d	4			2	7
6	C	C, 4	C, 5	C4, C5, C6	E, e	3	4	N, O, Sub	1	6
5	D	D, 3	D, 4	D7		2				5
4	E	E, 2	E, 3	E8						4
3										3
2										2
1										1
0	F, G, U	F, G, U, 1	F, G, 2, 1	F9	F, f	1	U			0

1. Applying to Botho University

Before applying to Botho University, students are encouraged to take time out to familiarise themselves with all the programmes on offer. Applicants must meet all the relevant minimum requirements for the programme of study they wish to study. It is also important for applicants to assess whether the programme they choose interests them and that they want to make a career out of it. Our friendly Admission Team Counsellors will provide information needed about the programmes and assist applicants to make informed choices. Details on programmes are available on our website:

www.bothouniversity.com

2. How to calculate points

The admission point system is used to measure your academic achievement based on your school-leaving results. Your school-leaving subject grades or percentages are converted into points as per the table above and based on your qualification. These points are added up to arrive at the number of points you have obtained.

3. Important points to remember when applying

- All students can apply in person or using the online application form available on the website. Please read the “Steps to Apply” document available on the application portal before applying.
- Clear certified copies of all relevant educational certificates.
- Clear certified copies of passport/identity card.
- Please read the Fee Structure and Policy document available on the website before applying.
- Should you have any doubts on the application process please contact our admissions department for further assistance.

FOSTERING STUDENT SUCCESS AND DELIVERING AN UNFORGETTABLE UNIVERSITY EXPERIENCE

Students looking to shape their long-term careers can be confident that Botho University's industry-relevant programs will help them achieve their academic and professional goals. However, what sets Botho University apart is its strong commitment to providing a memorable and enriching university experience. In addition to academic excellence, the university prioritizes offering innovative, high-quality, and digitally-driven support services to ensure that every student's journey is meaningful and fulfilling.

The Student and Alumni Affairs Department (SAAD) plays a key role in offering a wide range of services focused on student wellness, employability, entrepreneurship, and overall welfare. This department ensures that students receive a solid return on their investment in their education at Botho University. By providing a nurturing, positive, and supportive environment, SAAD helps create a highly practical and deeply engaging learning experience.

Our Extensive Range of Services Available to All Students:

- Academic Services and Psychosocial Counseling
- Health and Wellness Awareness, Training, and Services
- Sports, Cultural, and Recreational Activities
- Internship Guidance and Support
- Community Engagement Activities
- Global Student Exchange Opportunities
- Active Alumni Engagement
- Remote Internships with International Providers
- Entrepreneurship Development Training and Support

We are committed to **#StudentSuccess** through all our services, empowering students to excel both academically and personally.



REMOTE INTERNSHIPS STATISTICS AT BOTHO UNIVERSITY

Botho University is the

1ST
**INSTITUTION
IN AFRICA** 

to offer remote internships for academic credit

Remote Internships offered since

2021 

to eligible Botho students from all campuses of Botho University across Africa

Nearly

270 

Students placed on remote internships up to date



Remote Internship Employers from

33+ COUNTRIES
GLOBALLY

100% 

Guaranteed remote internships placement

50% 

of the Botho University Virtual Internship group received post internship offers

**EMPLOYERS WOULD
CONSIDER**

78%

of remote interns for a full time position

REMOTE INTERNSHIP EMPLOYERS INCLUDE

- Trinidad and Tobago
- Mozambique
- Norway
- Canada
- Belgium
- Hong Kong
- Cote D'Ivoire
- Nigeria
- China
- Malaysia
- Vietnam
- Singapore
- USA
- Netherlands
- South Africa
- Nigeria
- Kenya
- Argentina
- New Zealand
- Bangladesh
- South Korea
- India
- United Kingdom
- France
- Thailand
- Turkey
- UAE
- Japan
- Malta
- Georgia
- Cameroon

We have moved

TO OUR NEW STATE OF THE ART, MULTI-FACILITY BUILDING COMPLEX IN MASERU

BOTHO UNIVERSITY

VIBRANCE • INNOVATION • IMPACT

Ha Pena-Pena, next to Green city, adjacent to Kofi Annan Road



2025 ADMISSIONS OPEN*

- BSc in Computing
- BSc in Data Science
- BSc in Mobile Computing
- BSc in Computer Networking
- BCom in Finance
- BCom in Accounting
- Bcom in Risk Management
- BBA in Business Management
- BSc in Health Information Management

All our programmes are fully accredited by the Council of Higher Education (CHE) and aligned to the Lesotho Qualifications Framework.

SCAN ME

for complete details on our campus



+266 59685313

The Botho Community Awaits. Follow us & Join the *Vibrance* :



#TransformingOpportunity
ACROSS SUB-SAHARAN AFRICA